



4800 E. Falcon Dr., Mesa AZ 85215  
www.falconfieldairport.com

## FALCON FIELD AIRPORT VOLUNTARY HELICOPTER NOISE ABATEMENT PRACTICES

- » *These practices are recommended; some may not be advisable for every helicopter in every situation.*
  - » *Flight safety is our #1 priority. Noise abatement practices should NEVER compromise safety.*
- 
- » Reduce airspeed below maximum cruising speed to minimize blade slap.
  - » Climb at best rate to reach altitude as quickly as possible. Avoid maximum power climbs.
  - » Arrivals/departures per Letter of Agreement (LOA) or as directed by the tower.
  - » Minimize time spent hovering.
  - » Avoid sharp maneuvers such as rapid high "G" turns.
  - » Avoid low level, high power approaches/departures.
  - » Remain east of Roosevelt Canal when training.
  - » Operations within 2 miles of the airport, maintain 1900 (MSL).
  - » Simulated engine failure training should ONLY occur when a safe landing at the airport is assured.
  - » Avoid creating a sudden noise event - make smooth, slow power adjustments.
  - » Avoid training flights before 8:00 A.M. and after 6:00 P.M. local time.

**THANK YOU FOR FLYING FRIENDLY**



## FALCON FIELD PHONE NUMBERS

Airport Administration .....	(480) 644-2450
Noise Abatement Line .....	(480) 644-2444
Falcon Executive Aviation .....	(480) 832-0704
Heliponents .....	(480) 981-8300
ATIS .....	(480) 641-9378



Updated: September 2013



Mesa-Falcon Field  
Airport (FFZ)

**CONTACT TOWER  
PRIOR TO ENTERING  
CLASS "D" AIRSPACE**

TWR (S & E)	124.60
TWR (N & W)	119.70
GRD	121.30
CTAF	124.60
UNICOM	122.95
PHX APP/DEP	119.20
PRC AFSS	122.60
ATIS	118.25
ATIS #	(480) 641-9378

**FREQUENCIES  
SUBJECT TO  
CHANGE. NOT FOR  
NAVIGATIONAL  
USE. CHECK ATIS  
FOR CURRENT  
FREQUENCY  
ASSIGNMENTS.**

Elevation 1,394 ft  
MSL

N 33°27.65'  
W111°43.70'

**Traffic Pattern**

**Altitudes:**

Light Aircraft:  
2400 (MSL)/1006  
(AGL)

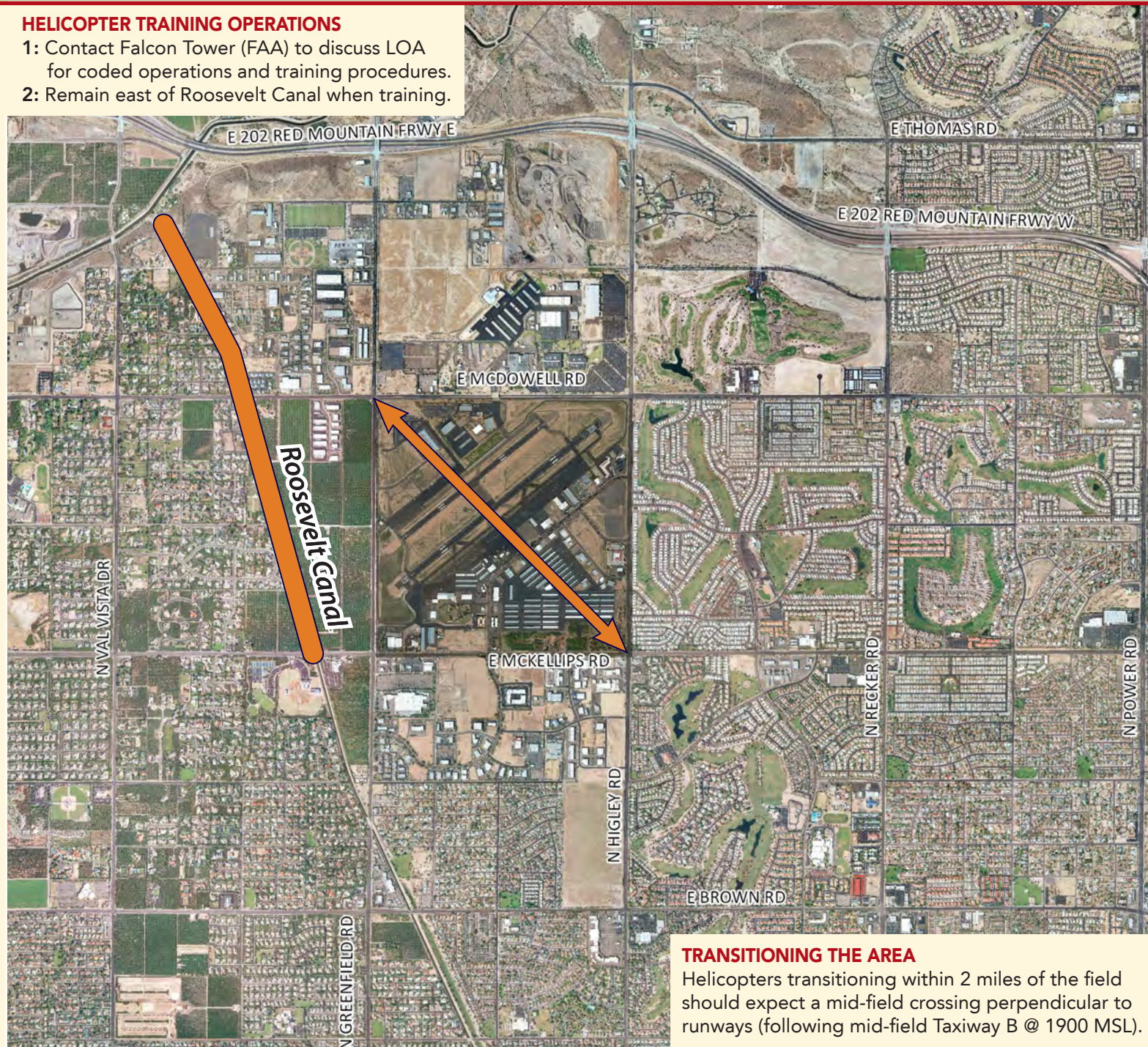
High-Performance  
Aircraft:  
2900 (MSL)/1506  
(AGL)

Helicopters:  
1,900 (MSL); 506  
(AGL) within 2 miles  
of the field

*All information provided is  
subject to change. Verify  
before use.*

## HELICOPTER TRAINING OPERATIONS

- 1: Contact Falcon Tower (FAA) to discuss LOA for coded operations and training procedures.
- 2: Remain east of Roosevelt Canal when training.



## TRANSITIONING THE AREA

Helicopters transitioning within 2 miles of the field should expect a mid-field crossing perpendicular to runways (following mid-field Taxiway B @ 1900 MSL).